

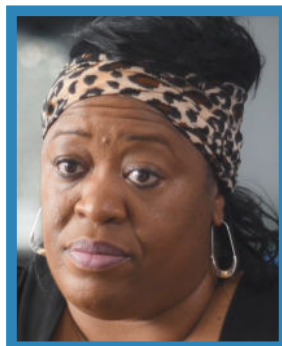
# Building on Success

## THERAPEUTIC FOSTER CARE EXPANDS

Lutheran Social Services of Illinois (LSSI) expanded its Therapeutic Foster Care Program to Central Illinois in January 2022, serving children ages 6-14 who live in communities within one hour of Peoria. LSSI's program began as an Illinois Department of Children and Family Services (DCFS) pilot in 2016 and also includes treatment teams in Aurora, Chicago, and Rockford.

The evidence-based program places children with histories of severe trauma and emotional/behavioral needs into single-family treatment homes rather than institutional settings or group homes. The initial outcomes from LSSI's five-year pilot show significant benefits, with 73% of kids successfully achieving their treatment goals. This surpasses the average completion rate of 66% in the research trials of all children enrolled in the Treatment Foster Care of Oregon model nationally and internationally.

"With Therapeutic Foster Care, LSSI is intervening



*"There are so many kids who need this, and if you can help one, you've done a great justice."*

—YVETTE STRINGER  
THERAPEUTIC FOSTER PARENT

earlier and helping families develop the tools and skills needed for children to thrive in homes," said Jere Murry, MSW, LSSI's Executive Director of Children's Community Services.

Children in Therapeutic Foster Care need more intensive support and services than children in traditional foster care. LSSI's program centers on teams of dedicated and highly trained clinicians, caseworkers, and specially trained foster parents. Teams work with

the children over nine to 12 months using intensive treatment to help them develop the pro-social skills needed to thrive in their family and community.

Yvette and Raymond Stringer of Joliet have been Therapeutic Foster Parents to several children since the program's inception. The changes in behavior and the confidence they've seen develop in the children they've fostered inspires them.

"To see a child get through these stepping stones...that's what motivates us," said Yvette. "There are so many kids who need this, and if you can help one, you've done a great justice."

*To learn more, visit [LSSI.org/TFC](https://LSSI.org/TFC).*



## PROJECT IMPACT:

# A Pivotal Program Providing Crisis Intervention

LSSI created Project IMPACT (Inter Multidisciplinary Pre-Screening Assessment Crisis Team) 30 years ago at Swedish NorthShore Hospital in Chicago. Located inside hospital emergency departments, it provides crisis intervention and mental health screenings to people struggling with mental health episodes and substance use disorders.

While hospital emergency departments are designed for people seeking emergency medical treatment, people in non-medical crises also seek help there. The program allows more effective treatment for all. Individuals presenting medical issues receive medical attention. Project IMPACT staff meet with patients and make appropriate treatment referrals for people with psychiatric or substance use issues.

Project IMPACT expanded in February 2022 to West Suburban Medical Center in Oak Park, LSSI's fifth Project IMPACT location.

One of the great values of the program is that it provides crisis services to every patient regardless of



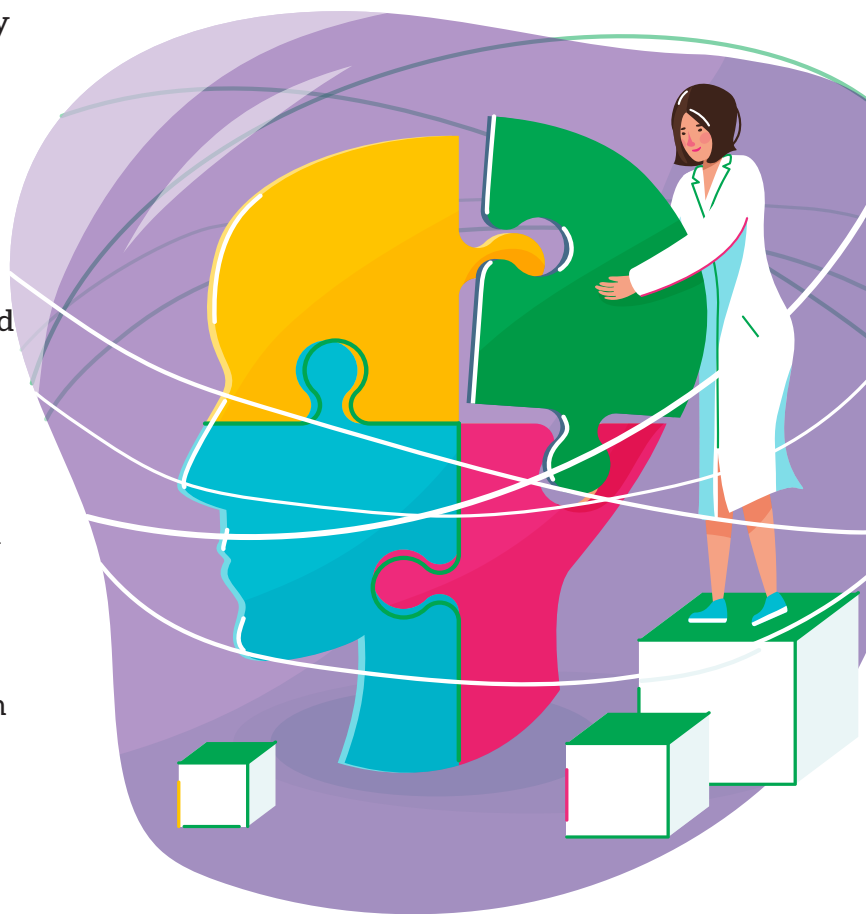
*“A lot of people lack the knowledge of what resources exist in the community. We help them recognize different levels of crisis and what resources exist for them.”*

—FEIFEI CHEN, LSW, PROJECT IMPACT  
CLINICAL DIRECTOR, WEST SUBURBAN MEDICAL CENTER

whether they have medical insurance. Patients who present mental health or substance use needs are screened and placed with appropriate services.

“Project IMPACT staff takes care of all behavioral and substance use patients from screening to preauthorization and placement,” said Manoj Patel, LSSI’s Associate Executive Director of Emergency Services. “That can take hours, so it frees up hospital staff to focus on more acute medical patients who require immediate attention.”

Project IMPACT staff refer patients to a network of resources, many through LSSI, such as individual



therapy, psychotropic medication management, and substance use treatment, or to another community provider. LSSI also can refer clients to West Suburban’s own substance use and mental health clinics.

“Crisis looks different for everyone, especially people in a mental health crisis,” said Feifei Chen, LSW, Project IMPACT’s Clinical Director at West Suburban. “For those patients who come to the emergency department with a mental health crisis, we are able to determine what their needs are and what resources exist for them. It’s definitely a good resource for the community.”

## PRESIDENT & BOARD CHAIR'S MESSAGE

# Caring for the Whole Person

Last year, LSSI provided whole-person care to over 42,000 children, adults, and seniors—that's one in every 297 people in Illinois. Caring for the whole person goes beyond providing safety, shelter, food, and clothing. LSSI strives to view the whole person, just as God does, to surround people with the necessary supports to build and enhance their lives.

Over LSSI's 155-year history, we have learned that we are more successful when we provide our services collaboratively. Our Therapeutic Foster Care Program and Project IMPACT, highlighted here, show the success these efforts can achieve.

The full spectrum of services LSSI offers—foster care, mental health, alcohol and drug treatment, affordable senior housing, residential programs for people with developmental disabilities, and programs that help people impacted by incarceration—build and enhance lives across Illinois.

What a privilege it is to share in life with children, adults, and seniors, as together we fulfill LSSI's mission to bring healing, justice, and wholeness to people and communities. We remain grateful for your ongoing involvement and support.

In faith,

Mark A. Stutrud  
President and Chief Executive Officer

John T. Rudy  
Chair, LSSI Board of Directors



## NEW SUPPORT FOR FAMILIES

LSSI began offering a new layer of services to support children and families in Fiscal Year 2022. Through DCFS, LSSI now provides Family Supportive Services. These services intervene when families have been reported to the DCFS Child Abuse Hotline but a child abuse or neglect investigation is not warranted. Instead, these families are referred for short-term supportive services over a 30-day timeframe. This includes an assessment of the family's needs and referrals to available community resources with the goal of preventing or remedying minor to moderate challenges that may be placing their children at risk. The preventative program allows LSSI to intervene earlier with families. The program is provided through LSSI offices in Canton, Champaign, Danville, Galesburg, Marion, Moline, Nachusa, Peoria, and Rockford.

# Financial Summary

## CONSOLIDATED STATEMENTS OF FINANCIAL POSITION

JUNE 30, 2022 AND 2021

<b>ASSETS</b>	<b>2022</b>	<b>2021</b>
Cash and cash equivalents	\$8,673,250	\$26,817,439
Accounts receivable	13,689,496	12,126,674
Unconditional promises to give, net	163,947	10,499
Prepaid expense and other assets	1,097,391	1,433,444
Short-term investments	17,543,547	8,048,080
Investments held for long-term purposes	2,561,415	2,962,147
Property and equipment, net	54,033,129	56,444,369
Other assets	9,437,408	8,839,322
<b>Total Assets</b>	<b>\$107,199,583</b>	<b>\$116,682,064</b>

## LIABILITIES AND NET ASSETS

Current liabilities	\$23,972,019	\$28,199,333
Long-term debt	14,425,226	14,956,054
Conditional agreements	43,141,661	43,141,661
Other long-term liabilities	3,947,324	4,129,407
<b>Total Liabilities</b>	<b>\$85,486,230</b>	<b>\$90,426,455</b>

## NET ASSETS

Without donor restrictions	\$12,704,606	\$19,428,223
With donor restrictions	9,008,747	6,827,386
<b>Total Net Assets</b>	<b>21,713,353</b>	<b>26,255,609</b>
<b>Total Liabilities and Net Assets</b>	<b>\$107,199,583</b>	<b>\$116,682,064</b>

## CONSOLIDATED STATEMENTS OF FINANCIAL POSITION

JUNE 30, 2022 AND 2021

<b>REVENUE</b>	<b>2022</b>	<b>2021</b>
Contributions and public support	\$9,032,025	\$6,196,829
Operating revenue	94,089,169	106,076,775
Rents and investment return, net	(2,420,740)	2,233,876
Gain (Loss) on disposal of property and equipment	148,022	(150,463)
Miscellaneous	437,063	344,198
<b>Total Revenue</b>	<b>\$ 101,285,519</b>	<b>\$ 114,701,215</b>

## EXPENSES

Program services	\$92,308,593	\$94,174,260
Administration and fundraising	10,997,438	9,336,378
<b>Total Expenses</b>	<b>103,306,031</b>	<b>103,510,638</b>
<b>Change in Net Assets Before Other Items</b>	<b>(2,020,512)</b>	<b>11,190,577</b>
Actuarial gain (loss) on annuity obligations	(61,834)	(59,055)
Increase in actuarial pension costs	(2,459,910)	697,387
<b>Change in Net Assets</b>	<b>(4,542,256)</b>	<b>11,828,909</b>
Net Assets, Beginning of Year	26,255,609	14,426,700
<b>Net Assets, End of Year</b>	<b>\$21,713,353</b>	<b>\$26,255,609</b>