



# Lutheran Social Services of Illinois

2025 IMPACT STATEMENT • JULY 1, 2024 THROUGH JUNE 30, 2025



## Mission

Responding to the Gospel, Lutheran Social Services of Illinois (LSSI) brings healing, justice, and wholeness to people and communities.



## Scan Me

Learn more about LSSI and the programs highlighted here.

## Vision and GenCare Approach

LSSI's GenCare approach engages, surrounds, and connects people we serve to the supports they need while promoting their dignity, enhancing their health and well-being, and helping them reach their full potential



## People Served by LSSI

**62,425** people served, one in every 203 Illinoisans, and 9% more than 2024.

### By Age:

- 54% of children served were ages 12–17.
- 17% of people served by all programs were ages 25–34.

### By Annual Income:

- 64% below \$5,000
- 88% below \$25,000

## Alcohol, Drug Treatment

Alcohol and drug use can deeply disrupt a person's life. LSSI offers a full continuum of treatment for people with substance use disorders, offering hope and healing through services like Inpatient Rehabilitation, Outpatient Substance Use Treatment, Recovery Homes, DUI Counseling and Education, and Sober Living. These life-changing services are offered in Chicago, Elgin, and Sterling.

**2,145** clients received alcohol and drug treatment services through LSSI.

## Affordable Housing

LSSI offers affordable housing to individuals 62+ and people over age 18 with disabilities at 20 sites throughout the state.

**1,336** residents with annual income less than \$25,000 were provided affordable housing through LSSI.



## Foster Care Services

Every child deserves a safe, loving, and supportive home. LSSI's Foster Care Program helps children find their forever homes through reunification, whenever possible, adoption, or guardianship. As Illinois' largest private foster care provider, LSSI partners with foster parents across 42 counties, offering training, licensing, and ongoing support to those who open their homes to children who have experienced abuse or neglect. LSSI offers **traditional, therapeutic, specialized, and emergency foster care**. Our Families Together Pilot Program aims to decrease the amount of time children spend in foster care.

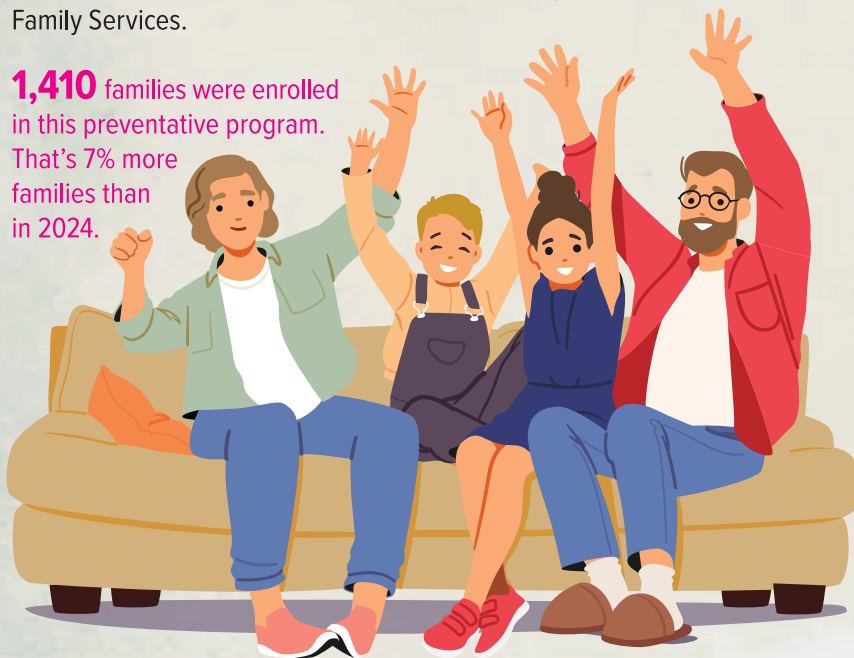
**2,578** children were served through LSSI foster care placements.



## Intact Family Services

Designed to stabilize, strengthen, enhance, and preserve family life by enabling children to remain safely at home, Intact Family Services works with families who have come to the attention of the Department of Children and Family Services.

**1,410** families were enrolled in this preventative program. That's 7% more families than in 2024.



## Homes for People with Developmental Disabilities

LSSI helps adults (18+) with intellectual/developmental disabilities live successfully in their communities, whether residential or community-based homes.

LSSI served **127** people with developmental disabilities, helping them live with dignity in their communities.

## Mental Health Services

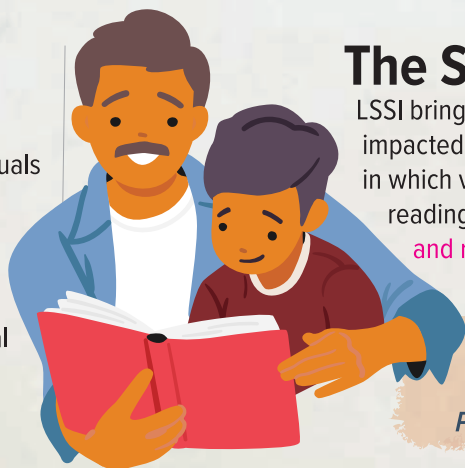
To address mental health and substance use treatment needs, LSSI offers case management, peer support, family assistance, counseling, integrated healthcare, substance use treatment, and crisis services through its Portage Cragin Counseling Center, a federally-funded Certified Community Behavioral Health Clinic (CCBHC). LSSI staff serve four Project IMPACT sites located in hospital emergency rooms, the Welcoming Center, and nearly 90 Chicago Public Schools. Counseling services also are provided at our Sterling office. In 2025, **19,520** clients received mental health services, a 14% increase from the previous year.

*"Whole-person care means focusing on clients' mental health, emotional health, spiritual health, and physical health. We help people in every aspect of their lives." — LSSI Mental Health Counselor*



## Intouch Home Care Services

Tailored to the unique needs of individuals and older adults, Intouch Home Care Services promote independence and well-being, helping them live safely and confidently at home. Offered in Cook County, services include personal care, transitional care, memory care, companion care, and more.



## The Storybook Project

LSSI brings hope and connection to people and families impacted by incarceration, including The Storybook Project, in which volunteers record parents who are incarcerated reading stories to their children. **Over 1,500** books and recordings were sent to children whose parents are incarcerated.

*"It's like sharing bedtime every night even though we're not there." — Storybook Parent Participant*



Evangelical  
Lutheran Church  
in America



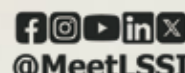
Community Partner



Lutheran  
Services  
in America



EQUAL HOUSING  
OPPORTUNITY



@MeetLSSI