



This *Impact Statement* shares information about LSSI's programs and the people we served last year.

## The People LSSI Served

50,291 children, adults, seniors, and families  
One in every 252 people in Illinois

### By Age

50% of children served were ages 10-14  
19% people served by all programs were 25-34

### By Annual Income

71% below \$5,000  
91% below \$25,000

# 50,291

children, adults, seniors, and families

.....  
*“Knowing the impact that you can have on a child's life supersedes the fear of getting too attached. Children in foster care need to feel that attachment. Whenever you have the ability to share love with a child, that is a joy.”*

— LSSI FOSTER PARENT



## Foster Care Services

The primary goal of LSSI's Foster Care Program is to help children find their forever home, either by reunification with birth families whenever possible or through adoption or guardianship. As the largest provider of Foster Care Services in Illinois, LSSI cares for children who have been removed from their birth families due to abuse and/or neglect and places them with foster families who receive training and support from LSSI. LSSI provides licensing for foster parents and offers Foster Care Services in 12 offices that cover 42 counties in Illinois.

**2,607** children were served through foster care placements.

Mission Statement  
Responding to the Gospel,  
Lutheran Social Services of Illinois  
(LSSI) brings healing, justice, and  
wholeness to people and  
communities.

## Therapeutic Foster Care

LSSI provides specialized Therapeutic Foster Care in Aurora, Chicago, Rockford, and Peoria through an evidence-based treatment program that places children with histories of severe trauma and emotional/behavioral needs into single-family homes rather than institutional settings. Of the children who were discharged last year, **77% successfully completed their treatment** and joined their planned aftercare family. This surpasses the average completion rate of 66% in the research trials of all children enrolled in the Treatment Foster Care of Oregon model across the U.S. and internationally. LSSI uses this model.

## Intact Family Services

Designed to stabilize, strengthen, enhance, and preserve family life by enabling children to remain safely at home, Intact Family Services works with families who have come to the attention of the Illinois Department of Child and Family Services. The program is run through LSSI offices in Aurora, Canton, Champaign, Chicago, Danville, Galesburg, Marion, Moline, Nachusa, Peoria, Rockford, and Vienna.



**1,391** families were enrolled in this program.

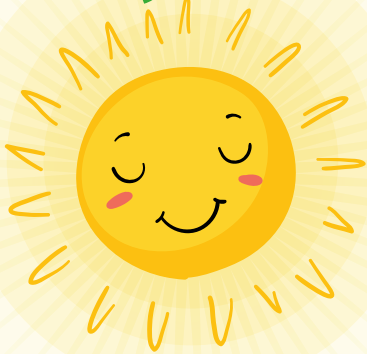
## Mental Health Services

LSSI was among the first organizations in Chicago to receive federal funding to launch a Certified Community Behavioral Health Clinic (CCBHC) to better serve the mental health and substance use needs of Chicago's Northwest Side neighborhoods. CCBHC is a special designation for clinics providing comprehensive mental health and substance use services.

LSSI's Portage Cragin Counseling Center in Chicago will become one of 450 CCBHC clinics nationwide. Case management, mental healthcare for veterans, peer supports, family support and counselor services, outpatient mental health and substance use services, integrated healthcare, and crisis services are all part of the CCBHC model.

LSSI provided critical mental health services to

**15,352** clients.



## People with Developmental Disabilities

LSSI guides each client aged 18 or older with Intellectual/Developmental Disabilities toward a plan to live successfully in their community. Our person-centered services range from residential to community-based living and include programming at our Shady Oaks Developmental Training Center.

LSSI served **127** clients with developmental disabilities.

## Alcohol and Drug Treatment

LSSI provides a full continuum of targeted Alcohol and Drug Treatment for individuals in Chicago, Elgin, and Sterling. These services include DUI Counseling and Education, Healthy Start Recovery Homes, Inpatient Rehabilitation, Outpatient Substance Use Treatment, and Sober Living.

LSSI served **2,399** clients with a substance use disorder.

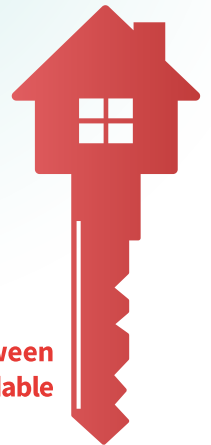
*"I want our next generation to flourish. We need to teach kids how to manage their emotions in an effective way. Doing that in the schools is so important because a lot of families have barriers that prevent these kids from getting counseling services outside of school."*

— LOREN SARGENT, COUNSELOR, LSSI STEP-UP SCHOOL-BASED COUNSELING PROGRAM

## Affordable Housing

For adults 62+ and people over age 18 with disabilities, LSSI provides affordable housing at 20 housing sites throughout Illinois. A Social Service Coordinator is available at every site to assist residents.

**1,447** residents with an annual income between \$5,000 and \$25,000 were provided affordable housing by LSSI.



## Prisoner and Family Ministry

LSSI'S Prisoner and Family Ministry serves people who are incarcerated and their families, as well as individuals who have returned from prison to their communities, through these programs: Re-entry for Returning Citizens, Visits to Mom, and the Storybook Project.



Funding provided in part by the Department of Human Services/Division of Substance Use Recovery and Prevention. Illinois Licensed Child Welfare Agency - License #013005.

LSSI does not discriminate in admission to programs or employment in compliance with the law.

